

EPBX Installation

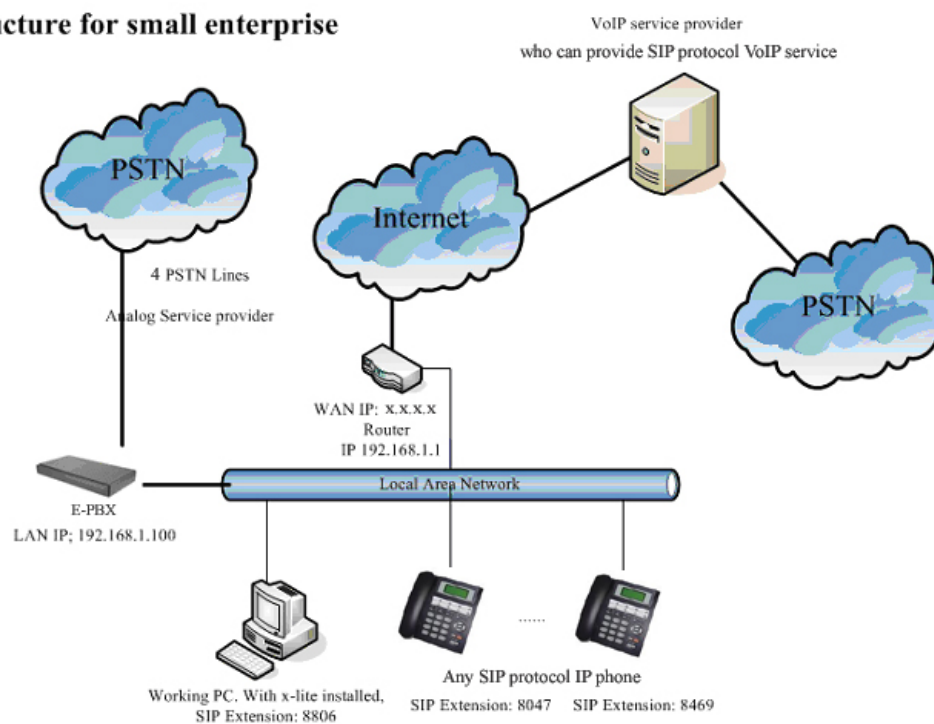
Introduce

EPBX is an IP PBX system based on Asterisk and has a big advantage on its inherent open source and ultra low power consumption (<5 watt in idle state, environment friendly).

EPBX is Open source IP PBX, support four interchangeable FXO/FXS ports., can be configured as SIP/IAX2 extensions. X-lite: Softphone run on the PC, can be configured as SIP extensions.

Simple Configure

Simple structure for small enterprise

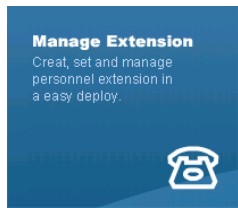


P 1

Connect EPBX like **P 1**, the epbx control IP is <http://169.254.21.21>, open it by Internet Explorer, you can see the login page

EPBX Installations have 5 steps:

STEP 1(Create New Extensions):



Click [button] come into Extensions manage page:

Manage Extensions --> Extension List

[Create New Extension](#) [Batch Modify](#)

Total 10 records Page 1/1

Extension	Type	Follow Me No.	Name	Dept.	DID	Display Name	Call Privileges	Modify	Cancel
800	ZAP		800		800		local_mobile/national/international/other /local_fixed	Modify	Delete
801	ZAP		801		801		local_mobile/national/international/other /local_fixed	Modify	Delete
802	SIP		802		802		local_mobile/national/international/other /local_fixed	Modify	Delete
803	SIP		803		803		local_mobile/national/international/other /local_fixed	Modify	Delete
809	SIP		809	809	809		local_mobile/national/international/other /local_fixed	Modify	Delete
810	SIP		810	810	810		local_mobile/national/international/other /local_fixed	Modify	Delete

Select an extension template: it have 3 protocols SIP, IAX2 and ZAP (ZAP means PSTN).
Most time we choose 'Default SIP template', click 'Create' button, and show that.

Manage Extensions --> Parameter Setting

Basic Parameter
DisabledEnabled -->

Extension No.

User Name

Extension Protocol Disallow modify

Department

Display Name

Dial Permission local_fixed local_mobile national international other

Follow Me No. Please separate multi-numbers using '-' if setting multi-numbers, eg. 8003-

Ring Time of Follow Me second

[Display Parameter Option](#)

Parameter can provide Certified Administrator to adjust the advanced function of the system.
Please keep default Value, unless you understanding the parameter. **Understand Program**

[Save Extension Parameter](#) [Return Extension List](#)

Click 'Display Parameter Option' you can see the advanced setting

Hide parameter option

SIP Device Options

password	123456	
dtmfmode	rfc2833	
canreinvite	no	
context	from-internal	
host	dynamic	
type	friend	
nat	yes	
port	5060	
qualify	yes	
callgroup	1	
pickupgroup	1	
disallow		
allow	all	
dial	SIP/804	eg. SIP/8003
accountcode		
mailbox	804@device	eg. 8003@device
Voicemail	Enabled	
voicemail password	123456	
email address		
email attachment	attach=no	eg. attach=yes / attach=no
Play CID	saycid=no	eg. saycid=yes / saycid=no
Play Envelope	envelope=no	eg. envelope=yes / envelope=no
vm options		
vm context	default	

Use the default setting and click **Save Extension Parameter** button.

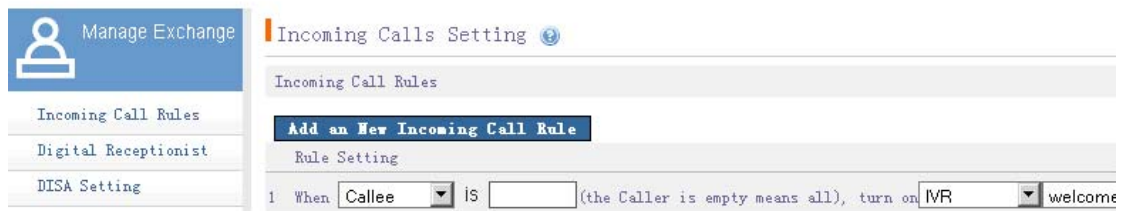
Then the new extension is ready.

Step 2(Create IVR):

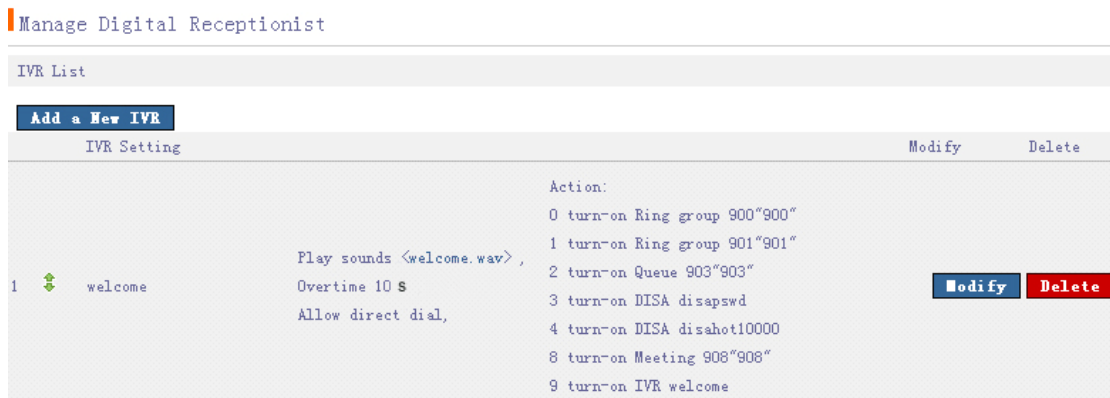
We have provided a default IVR, if you want to create your own IVR, please follow this step:



Click **Exchange** come to this web page:



And click 'Digital Receptionist' URL to open the IVR manage page:



Click **Add a New IVR** button to add a New IVR.



At this page you can set 'IVR name', 'Announcement' and 'Increasing option'

The Announcement that you can record by yourself like this:

Step1: register a extension on EPBX

Step2: Dial *77xx(xx=number),you can hear a IVR and will tell you that you can make record after you hear a prompt tone

Step3: record your message and hung-up the phone

Step4: you can select the Announcement xx.wav (xx is your input number at before)

At last time you can click **Increasing Option** button to add the options when somebody make a call into the EPBX.

Please mind that if you need to run the IVR for a defined ring group, you should do Step3 before this step.

Step 3(Create Ring group):

Click URL: 'Ring group' come to the Ring group page:

Group No.	Ring Group Name	Welcome Message	Ring Method	Time	When no answer	Save	Cancel
900	900	None	Ring all	20s	IVR	welcome	Hide

900 Member list

- 809 " 809 "

Available extensions

- 800 " 800 "
- 801 " 801 "
- 802 " 802 "
- 803 " 803 "
- 810 " 810 "
- 812 " 812 "

901	901	None	Sequence	20s	IVR	welcome	detail	Save	Delete
-----	-----	------	----------	-----	-----	---------	--------	------	--------

Click **Add new Ring Group** button to create a new Ring Group

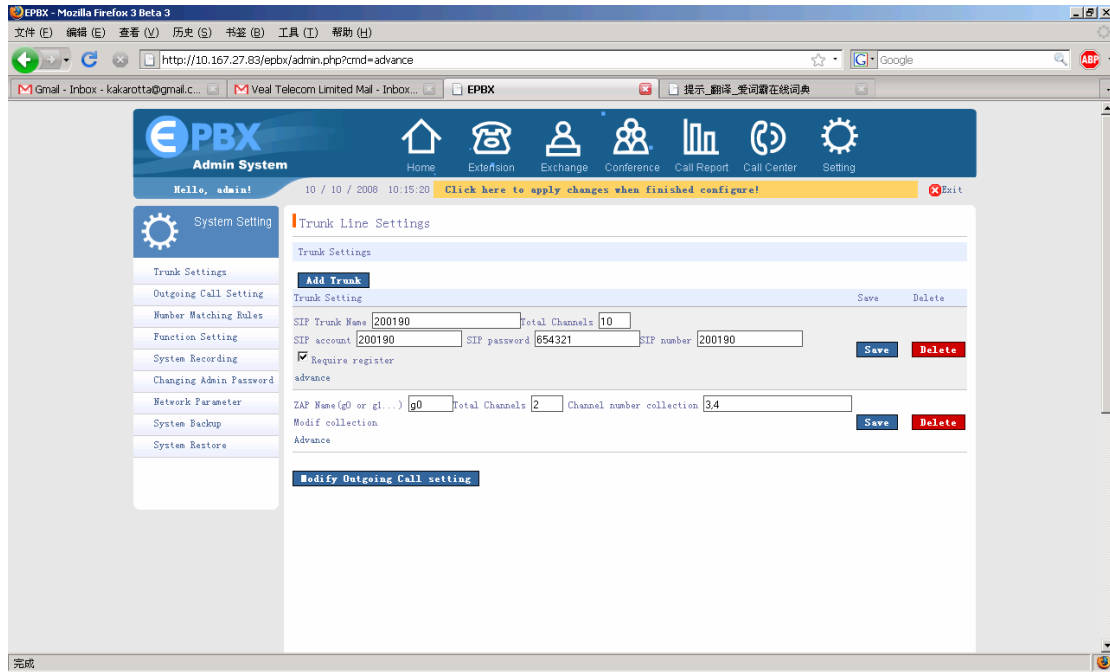
You can add extensions in this Ring Group, and set the Ring Group's IVR, 'Ring Method', 'Time' and 'when no answer'.

* Please attention: Ring group number should be different with any extension number

Step 4(Trunk Settings):

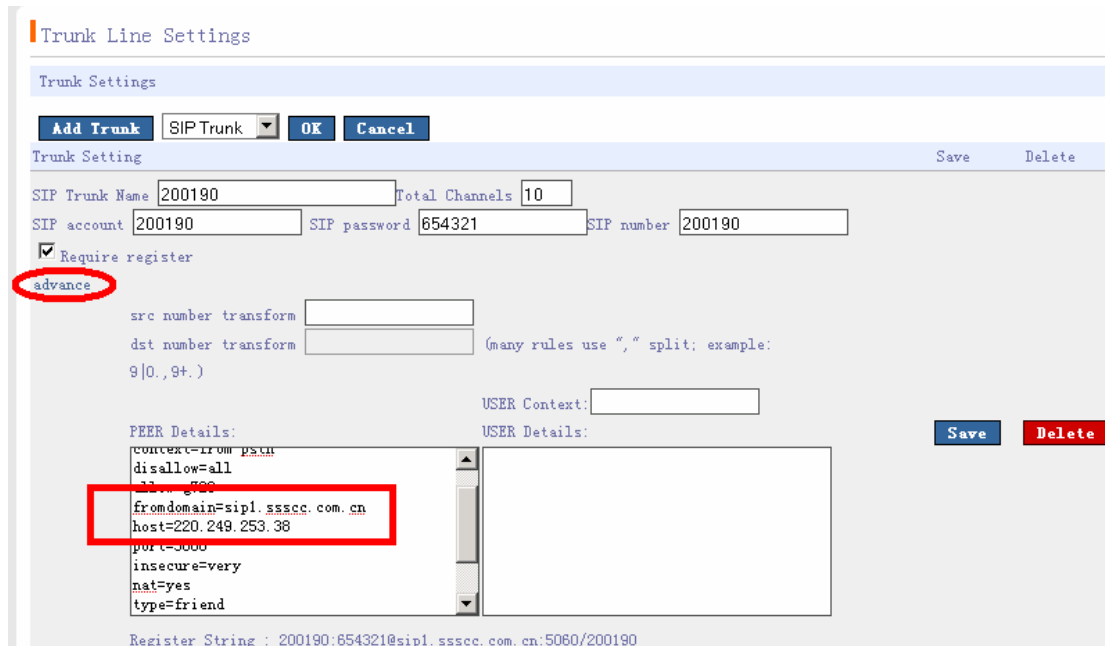


Click  to open this page



At this page you can add SIP or IAX2 trunk by click **Add Trunk** button

SIP trunk:



And press 'advance' URL you can see the advance setting here, input 'SIP Trunk Name', 'Total Channels', 'SIP account', 'SIP password', 'SIP number', 'fromdomain' and 'host'.

Press **Save** button after done it.

Open 'Number Matching Rules' URL:

No. Matching Rule

No. Matching Rule		Save	Delete
Add No. Rule			
Rule Setting		Save	Delete
1	Name: local_fixed Dial pattern: 1XX,9XX,10000,400XXXX,800XXX,[2-8]XXXXXXXX User setting: [v] Exterior line password: [v]	Save	Delete
2	Name: local_mobile Dial pattern: 1ZXXXXXXXX User setting: [v] Exterior line password: [v]	Save	Delete
3	Name: national Dial pattern: 0ZXXX. User setting: [v] Exterior line password: [v]	Save	Delete
4	Name: international Dial pattern: 00ZXXXX. User setting: [v] Exterior line password: [v]	Save	Delete
5	Name: other Dial pattern: X. User setting: [v] Exterior line password: [v]	Save	Delete

Modify No. Matching Rule

You can add Dial plan following this rule:

Rules:

- "X": matches any digit from 0-9
- "Z": matches any digit from 1-9
- "N": matches any digit from 2-9
- "[]": matches any digit or letter in the brackets.
(in this example, [1237-9] matches one of digit "1, 2, 3, 7, 8, 9")
- ".": wildcard, matches one or more characters
- "|": removes a dialing prefix from the number (before routing to trunk) (for example, "9|NXXXXXXXX" would match when some dialed "978072993" but would only pass "78072993" to the trunk)
- ",": separates more rules from each other (for example, "1XXXXXXXXXX, 400XXXXXXXX, 800XXXXXXXX, NXXXXXXXX, [19]XX, [19]XXXX, 9|0Z. ").

Cancel

At last time open 'Outgoing Call Setting' URL:

Outgoing Call Rule Setting

Outgoing Call Rule Setting				Save	Delete
Add Outgoing Call Rule					
	Rule Setting			Save	Delete
1	Outgoing is <input type="text" value="local_fixed"/>	use trunk <input type="text" value="ZAP/g0"/>	, standby trunk <input type="text" value="ZAP/g0"/>	<input type="button" value="Save"/>	<input type="button" value="Delete"/>
2	Outgoing is <input type="text" value="local_mobile"/>	use trunk <input type="text" value="ZAP/g0"/>	, standby trunk <input type="text" value="ZAP/g0"/>	<input type="button" value="Save"/>	<input type="button" value="Delete"/>
3	Outgoing is <input type="text" value="national"/>	use trunk <input type="text" value="SIP/200190"/>	, standby trunk <input type="text" value="ZAP/g0"/>	<input type="button" value="Save"/>	<input type="button" value="Delete"/>
4	Outgoing is <input type="text" value="international"/>	use trunk <input type="text" value="SIP/200190"/>	, standby trunk <input type="text" value="ZAP/g0"/>	<input type="button" value="Save"/>	<input type="button" value="Delete"/>
5	Outgoing is <input type="text" value="other"/>	use trunk <input type="text" value="ZAP/g0"/>	, standby trunk <input type="text" value="ZAP/g0"/>	<input type="button" value="Save"/>	<input type="button" value="Delete"/>

Modify No. Matching Rule

You can set which trunk you want the dial plan effect on it.

- Please attention: the upper rules will be more preferential than lower rules

Step 5(Make the setting in operation):

After all settings complete, please press:

[Click here to apply changes when finished configure!](#)

Button to apply them.