

E-PBX DATASHEET

Introduce

E-PBX is an IP-PBX, a kind of Integrated and Smart Communication System specially designed for SME (Small and Media Enterprises). Based on enterprise's internet, it provides advanced VOIP communication, and works compatibly with PSTN connection and equipment already existed as well.

Applied our E-PBX, kinds of voice communication services of conventional PBX such as extension management, smart telephone exchange, conference call, calling queue and MUPT can be realized better, for our E-PBX on the one side strengthens the materiality, flexibility and cost-effect of these functions; and on the other side E-PBX integrates the functions based on digital such as soft terminal, instant communication, status monitor, communication list and voice mail.

E-PBX caters to enterprise's need to the technique of integrating voice and data. Equipped E-PBX, you can promote the inter-enterprise conformity of communication system and business process, enhance the image of your enterprise, strengthen the satisfaction of customers, elevate the communication efficiency, and eventually create more value for your enterprise.

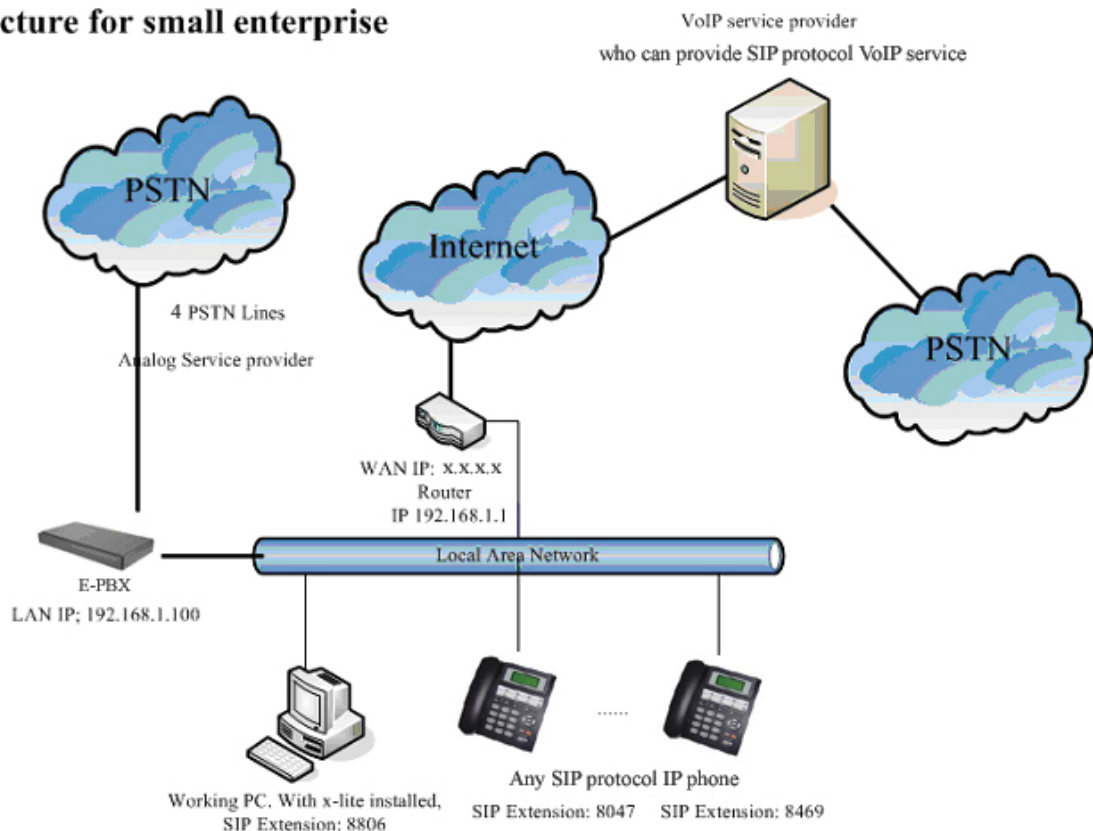
Port: 4FXO, 1RJ45

Concurrent Call: 20

User Capacity: no limit

System set up map

Simple structure for small enterprise



Following devices are used in the structure:

1. E-PBX with 4 FXO loaded.

* The FXO port is used to connect to PSTN while FXS port is used to connect to your normal phone.

2. Working PC, x-lite runs on this computer act as a sip extension.

3. Any SIP protocol IP phone, register to E-PBX to act to as SIP extension.

Functions & Features

Extension:

Create and management of extension

Free internal call (extension call extension)

Voice message

Call park

Call hold/ retrieve

Call transfer (attendant/ blind)

Call waiting

3-Way calling

Make out bound call

Do not disturb

Call forwarding

Call management:

Call rule setting (dial plan)

Incoming call disposal

CDR

Conference: max 20 participants

Call center:(on developing)

Multiple queues

No answer rule and disposal

Multiple ring and answer rules

Incoming service concurrent call limitation

IVR:

IVR recording and management

IVR rules for no limit IVR tree

Ring time setting

No answer rule and disposal

Other information

Dimension: 22cm * 12cm * 3cm (L*W*H)

Power: input 100~240V, output 12V 2A

Port: 4FXO, 2RJ45 (10/100M)

Protocol: SIP (based on Asterisk)

Storage Temperature: -10° to 65° C

Humidity: 10% to 90% no dew

Operating Temperature: 0 to 50° C