

EPBX Installation

Introduce

E-PBX is an IP-PBX, a kind of Integrated and Smart Communication System specially designed for SME (Small and Media Enterprises). Based on enterprise's internet, it provides advanced VOIP communication, and works compatibly with PSTN connection and equipment already existed as well.

Applied our E-PBX, kinds of voice communication services of conventional PBX such as extension management, smart telephone exchange, conference call, calling queue and MUPT can be realized better, for our E-PBX on the one side strengthens the materiality, flexibility and cost-effect of these functions; and on the other side E-PBX integrates the functions based on digital such as soft terminal, instant communication, status monitor, communication list and voice mail.

E-PBX caters to enterprise's need to the technique of integrating voice and data. Equipped E-PBX, you can promote the inter-enterprise conformity of communication system and business process, enhance the image of your enterprise, strengthen the satisfaction of customers, elevate the communication efficiency, and eventually create more value for your enterprise.

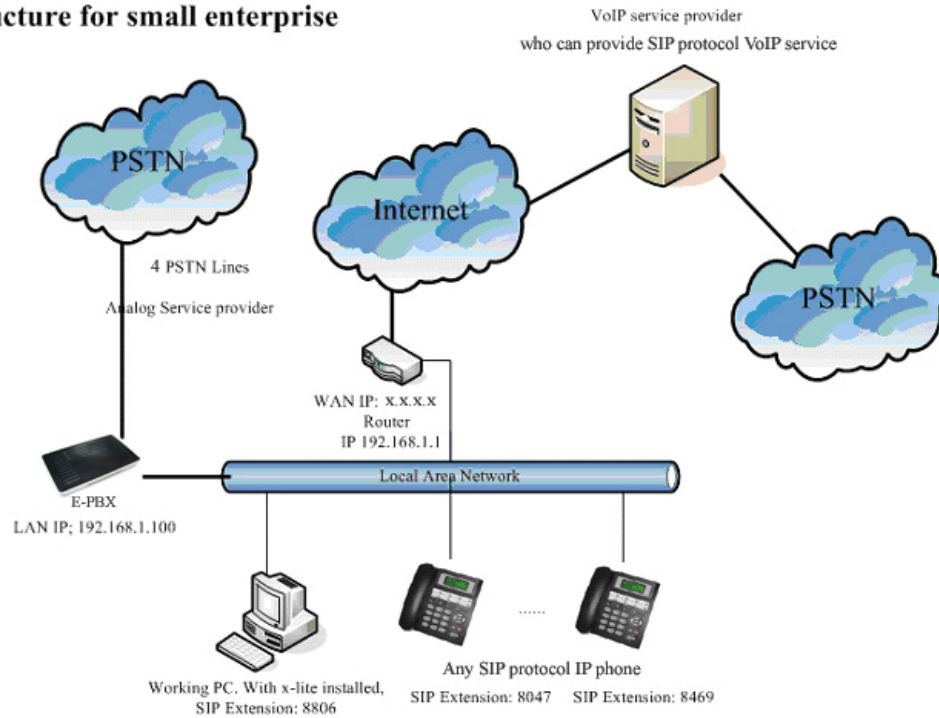
Port: 4FXO, 1*RJ45

Concurrent Call: 20

User Capacity: no limit

Simple Configure

Simple structure for small enterprise

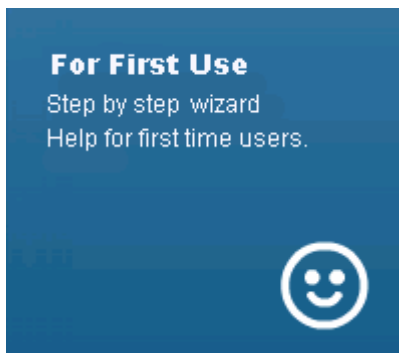


P 1

Connect EPBX like **P 1**, the epbx control IP is <http://169.254.21.1>, open it by Internet Explorer, you can see the login page

***Because 169.254.21.1 is a special IP, please ask for your network manager or support engineer to know how to set your PC then to visit this IP.**

For first use



The windows will display when you click "For first use"

For first uses 

- Step 1** Set networking parameter. [start](#)
- Step 2** Trunk Setting.If you have no trunks, just skip this step. [start](#)
- Step 3** Dial Rules Setting. [start](#)
- Step 4** Manage Extensions. [start](#)
- Step 5** Upload IVR. [start](#)
- Step 6** Setting incoming call rules. [start](#)
- Step 7** [Click here Apply Settings](#), or just close this windows and click red bar.


It will let you know the Steps of set up the EPBX and let the EPBX work

EPBX Installations have 7 steps:

STEP 1(Set Network Parameter):

You can click the the step 1 start button turn to network parameter setting page to set up the networking in “For frist uses” window

Click here turn to Network Parameter Setting page

For first uses 

- Step 1** Set networking paramete [start](#)
- Step 2** Trunk Setting.If you have no trunks, just skip this step. [start](#)
- Step 3** Dial Rules Setting. [start](#)
- Step 4** Manage Extensions. [start](#)
- Step 5** Upload IVR. [start](#)
- Step 6** Setting incoming call rules. [start](#)
- Step 7** [Click here Apply Settings](#), or just close this windows and click red bar.

In the Network Parameter Setting page you can set the EPBX’s network state that you wanted

Network Parameter Setting

Wan Setting

Type	STATIC
WAN Ip Address	PPPOE 3
WAN Net Mask	STATIC 4.0
WAN Gateway	10.167.26.1
DNS1	205.171.3.65
DNS2	64.81.79.2

LAN Info

LAN IP Address 169.254.21.1
LAN NET Mask 255.255.0.0

Save Network Parameter

(Please reboot system after modify network parameter!)

Step 2(Trunk Settings):

NOTICE: Please make sure if you need use VOIP service or not. If do not need it, you can directly go step 3.

You can click the the step 2 “start” button turn to trunk setting page

click here turn to Trunk Setting page

For first uses [Close]

- Step 1 Set networking parameter. [start](#)
- Step 2 Trunk Setting. If you have no trunks, just skip this step. [start](#)
- Step 3 Dial Rules Setting. [start](#)
- Step 4 Manage Extensions. [start](#)
- Step 5 Upload IVR. [start](#)
- Step 6 Setting incoming call rules. [start](#)
- Step 7 [Click here Apply Settings](#), or just close this windows and click red bar.

Trunk Line Settings

Trunk Settings

Add Trunk SIP Trunk **OK** **Cancel**

Trunk Setting	Save	Delete
SIP Trunk Name SIP Trunk FXO Trunk IAX2 Trunk		
Total Channels <input type="text" value="11"/>		
Server Address <input type="text"/>	Server Domain <input type="text"/>	Server Port <input type="text" value="5060"/>
SIP account <input type="text"/>	SIP password <input type="text"/>	SIP number <input type="text"/>
<input checked="" type="checkbox"/> Require register	Save	Delete
Advance		
SIP Trunk Name <input type="text"/>	Total Channels <input type="text" value="11"/>	
Server Address <input type="text"/>	Server Domain <input type="text"/>	Server Port <input type="text" value="5060"/>
SIP account <input type="text"/>	SIP password <input type="text"/>	SIP number <input type="text"/>
<input checked="" type="checkbox"/> Require register	Save	Delete
Advance		
FXO Name(g0 or g1...) <input type="text" value="g0"/>	Total Channels <input type="text" value="4"/>	Channel number collection
<input type="text" value="1,2,3,4"/>	Modif collection	Save Delete
Advance		

Modify Outgoing Call setting

At this page you can add SIP , IAX2,and FXO trunk by click **Add Trunk** button

SIP trunk:

SIP Trunk Name <input type="text"/>	Total Channels <input type="text" value="11"/>	
Server Address <input type="text"/>	Server Domain <input type="text"/>	Server Port <input type="text" value="5060"/>
SIP account <input type="text"/>	SIP password <input type="text"/>	SIP number <input type="text"/>
<input checked="" type="checkbox"/> Require register	Save	Delete
Advance		

In put the Sip detail in this trunk, if you want let this trunk register to the softswitch pls make sure

the **Require register** is chose

When done ,Press **Save** button after done it.

FXO trunk

FXO Name(g0 or g1...) <input type="text" value="g0"/>	Total Channels <input type="text" value="4"/>	Channel number collection
<input type="text" value="1,2,3,4"/>	Modif collection	Save Delete
Advance		

When you click the URL [Modif collection](#) ,than you will see the FXO's grouping

FXO Name(g0 or g1...) <input type="text" value="g0"/>	Total Channels <input type="text" value="4"/>	Channel number collection	
<input type="text" value="1,2,3,4"/>	Hide	Save Delete	
<input checked="" type="checkbox"/> fxsks=1	<input checked="" type="checkbox"/> fxsks=2	<input checked="" type="checkbox"/> fxsks=3	<input checked="" type="checkbox"/> fxsks=4
Advance			

You can change the FXO's grouping that you wanted

Rules:

- "X": matches any digit from 0-9
- "Z": matches any digit from 1-9
- "N": matches any digit from 2-9
- "[]": matches any digit or letter in the brackets.
(in this example, [1237-9] matches one of digit "1, 2, 3, 7, 8, 9")
- ".": wildcard, matches one or more characters
- "|": removes a dialing prefix from the number (before routing to trunk) (for example, "9|NXXXXXXXX" would match when some dialed "978072993" but would only pass "78072993" to the trunk)
- ",": separates more rules from each other (for example, "1XXXXXXXXXX, 400XXXXXXXX, 800XXXXXXXX, NXXXXXXXX, [19]XX, [19]XXXX, 9|0Z. ").

Cancel

at here you can add the dial rule that you like, you also can change the dialing number at here

Delete numbers from beginning, and add as dialing prefix
use trunk , standby trunk

STEP 4(Manager Extensions):

You can click the the step 4 start button turn to Dial Rules Setting page

Click here turn to manage extensions page

For first uses

- Step 1** Set networking parameter. [start](#)
- Step 2** Trunk Setting. If you have no trunks, just skip this step. [start](#)
- Step 3** Dial Rules Setting. [start](#)
- Step 4** Manage Extensions. [start](#)
- Step 5** Upload IVR. [start](#)
- Step 6** Setting incoming call rules. [start](#)
- Step 7** [Click here Apply Settings](#), or just close this windows and click red bar.

Manage Extensions --> Extension List

[Create New Extension](#) [Batch Modify](#)

Total 23 records Page 1/1

Extension	Type	WebPwd	NoAnsFwd	Name	Dept.	DID	Display Name	MAC	Modify / Cancel
800	SIP	123456		800		800		00167801128b	Modify Delete
801	SIP	123456		801		801		001678012d75	Modify Delete
802	SIP	123456		802		802		001678009b89	Modify Delete
803	SIP	123456		803		803			Modify Delete
804	SIP	123456		804		804			Modify Delete
805	SIP	123456		805		805			Modify Delete

Here is extension's MAC address

- * **Koncept KE2100 IP Phone can plug and play with EPBX. If you defined a KE2100's MAC address in extension setting, this KE2100 will auto get this extension number from EPBX.**

Select an extension template: it have 2 protocols SIP and IAX2.

Most time we choose 'Default SIP template', click 'Create' button, and show that.

Manage Extensions --> Parameter Setting

Basic Parameter

DisabledEnabled -->

Extension No.

User Name

Extension Protocol Disallow modify

Derpartment

Display Name

Dial Permission local_fixed local_mobile national international other

Follow Me No. Please separate multi-numbers using '-' if setting multi-numbers, eg. 8003-13512345678

Ring Time of Follow Me second

[Display Parameter Option](#)

Parameter can provide Certified Administrator to adjust the advanced function of the system.
Please keep default Value, unless you understanding the parameter. **Understand Program**

[Save Extension Parameter](#) [Return Extension List](#)

Click 'Display Parameter Option' you can see the advanced setting

Hide parameter option

SIP Device Options

password	123456	
dtmfmode	rfc2833	
canreinvite	no	
context	from-internal	
host	dynamic	
type	friend	
nat	yes	
port	5060	
qualify	yes	
callgroup	1	
pickupgroup	1	
disallow		
allow	all	
dial	SIP/804	eg. SIP/8003
accountcode		
mailbox	804@device	eg. 8003@device
Voicemail	Enabled	
voicemail password	123456	
email address		
email attachment	attach=no	eg. attach=yes / attach=no
Play CID	saycid=no	eg. saycid=yes / saycid=no
Play Envelope	envelope=no	eg. envelope=yes / envelope=no
vm options		
vm context	default	

Use the default setting and click **Save Extension Parameter** button.
 Then the new extension is ready.

Step 5(Create IVR):

Click here turn to upload IVR page

For first uses Apply changes when finished config

- Step 1** Set networking parameter. [start](#)
- Step 2** Trunk Setting.If you have no trunks, just skip this step. [start](#)
- Step 3** Dial Rules Setting. [start](#)
- Step 4** Manage Extensions. [start](#)
- Step 5** Upload IVR. [start](#)
- Step 6** Setting incoming call rules. [start](#)
- Step 7** [Click here Apply Settings](#), or just close this windows and click red bar.

System Recording

Custom Recording list

Select All | Select None [Delete](#) [Record](#) [Upload](#)

Date	Name	Time(Second)	
<input type="checkbox"/>	welcome2conference.wav		Play
<input type="checkbox"/>	1164208132.wav		Play
<input type="checkbox"/>	welcome.wav		Play

Select All | Select None [Delete](#) [Record](#) [Upload](#)

System Sounds list

[Upload](#)

FileName	Text Desc.	Duration (sec)	
activated.gsm	activated	1.06	Play
all-circuits-busy-now.gsm	All circuits are busy now	1.78	Play
an-error-has-occured.gsm	An error has occured.	1.74	Play
auth-incorrect.gsm	Login incorrect. Please enter your password followed by the pound key.	4.56	Play
auth-thankyou.gsm	Thank you	4.48	Play

At here you can upload the IVR ,click “upload” button

Down wave file from tftp

wave name
file name(wav format). Eg. demo.wav

tftp ip
Eg. 192.168.1.3

and fill the TFTP server ip and file name in it,press "OK",than your IVR will be upload on the EPBX,but you need be sure the file format,the format must be, "8k, single wave"

* the way of use TFTP tool is the same as "System Backup"

Step 6(Incoming call rule):

Click here turn to incoming call rules page

Home Extension Exchange Conference

For first uses apply changes when finished config

Step 1 Set networking parameter.

Step 2 Trunk Setting.If you have no trunks, just skip this step.

Step 3 Dial Rules Setting.

Step 4 Manage Extensions.

Step 5 Upload IVR.

Step 6 Setting incoming call rules.

Step 7 Click here Apply Settings, or just close this windows and click red bar.

Incoming Calls Setting

Incoming Call Rules

Allow Sip Anonymous Incoming Call

Rule Setting

1	When	<input type="text" value="Callee"/>	is	<input type="text"/>	(the Caller is empty means all), turn on	<input type="text" value="IVR"/>	<input type="text" value="welcome"/>	<input type="button" value="Save"/>	<input type="button" value="Delete"/>
---	------	-------------------------------------	----	----------------------	--	----------------------------------	--------------------------------------	-------------------------------------	---------------------------------------

Callee
Caller
FXO Trunk

At here you can set the incoming call rules

Callee mean called number or trunk

Caller mean the number call into the EPBX

FXO trunk mean the pstn line

When you choose Callee or Caller,than you only need input the sip trunk number into the textbox

If you choose the FXO trunk than you can input 1,2,3 or 4 into the textbox,it mean when the call into the EPBX from the fxo line 1,2,3 or 4 than turn on IVR

Step 7(Make the setting in operation):

After all settings complete, please press:

Click here to apply changes when finished configure!

Button to apply them.

Or press

